

Performance Coaching: Strengthening Schools to Sustain Success

**Dr. Steven Moats
Dr. Sharon Harsh**

May 22, 2008

Moderator: Nancy Balow

Welcome!

If you lose your Internet connection, close your browser, reopen it, and enter the webinar URL.

If your phone connection fails, just call back.

During the presentation, your phone will be muted.

To turn up the volume, dial Star 4.

To get in the phone queue to ask a question, dial Star 1.

To submit a written question, just type it into the chat box at any time.

Follow Up

- We will e-mail materials about performance coaching at the school and district levels.
- Later in the presentation we will tell you how to sign up for a free half-hour consultation with our presenters.

About Edvantia

- Private nonprofit corporation founded in 1966
- Operates Appalachia Regional Comprehensive Center, Parental Information and Resource Center for WV, Tennessee Exemplary Educators, and other state contracts
- Many contracts with education foundations, publishers, and programs to conduct research and evaluation
- Past contracts include regional educational laboratory, comprehensive center, Eisenhower consortium, National Science Foundation, ERIC clearinghouse



Decisions, decisions...



Dr. Sharon Harsh

- Director of Appalachia Regional Comprehensive Center at Edvantia
- Leader in Residence in Department of Educational Leadership, WVU



Dr. Steven Moats

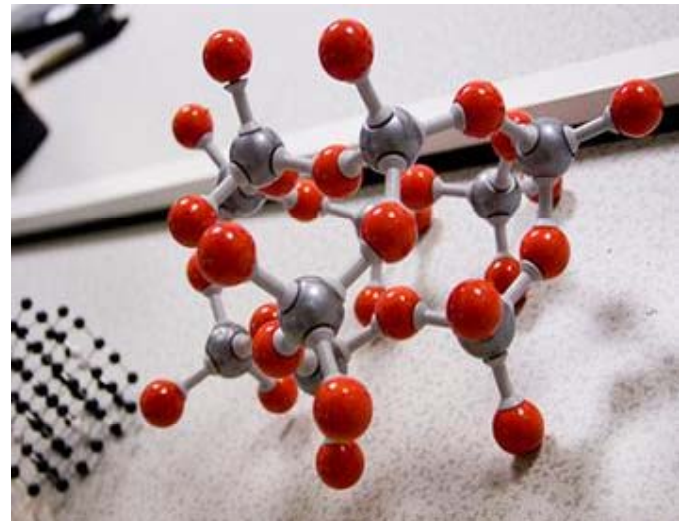
- Director of the Harvard award-winning Tennessee Exemplary Educators Program at Edvantia
- Former teacher and Kentucky Distinguished Educator

Agenda

- Importance of using a research-based framework
- Gathering data to diagnose status
- Selecting proven solutions

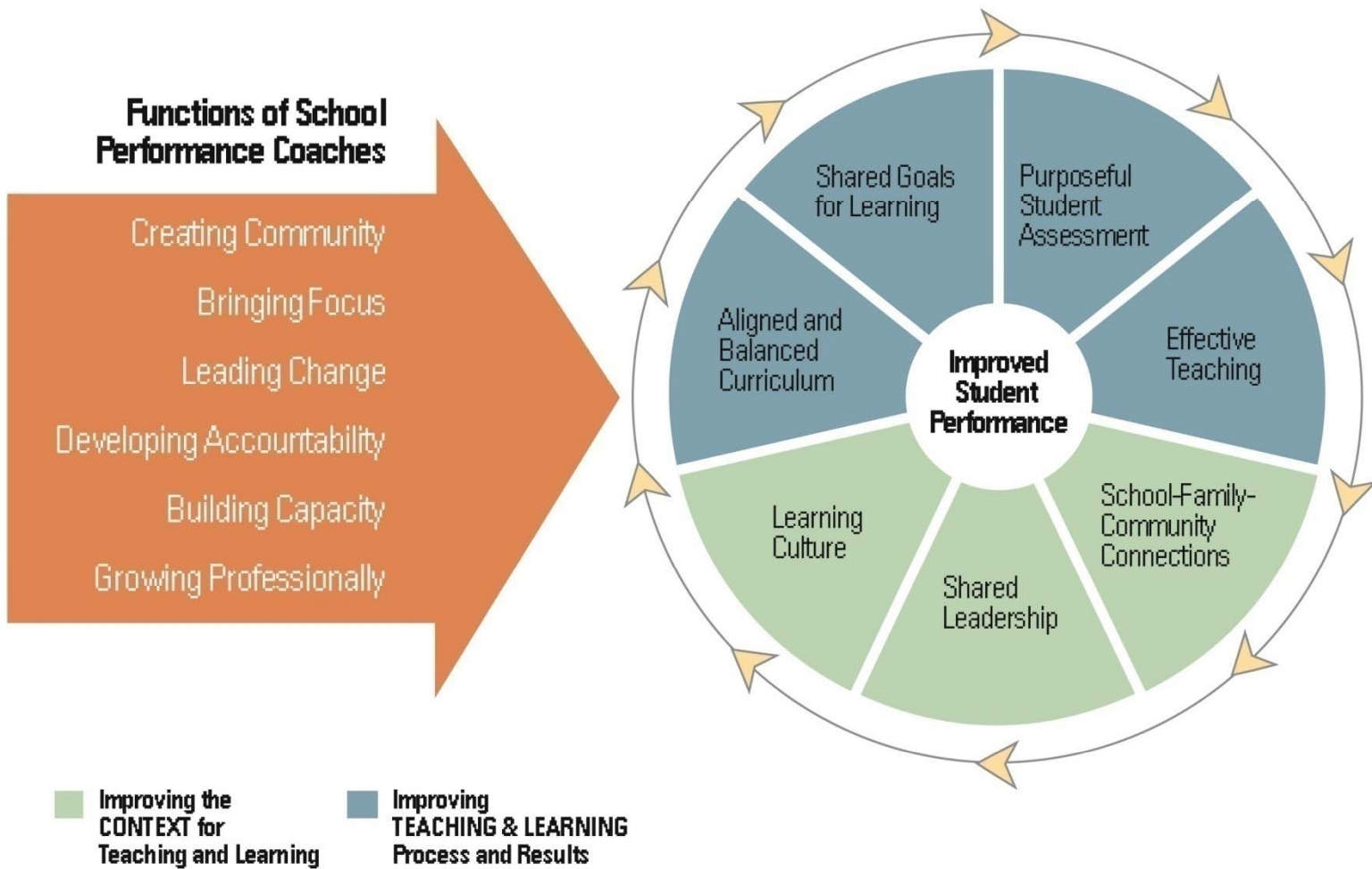
Decision: Framework

- Schoolwide model
- Pedagogical approach
- Christmas Tree
- Research based



Characteristics of a Research-Based Framework

- Conceptual base
- Grounded in research
- Well-defined components



Selecting a Research Framework





- To ask a question, type in the chat box or dial Star 1 on your phone.
- From your perspective, what might be the value of using a research-based framework to help you think about the big picture of school improvement?
- Any experiences to share?

Decision: Unlocking Your Data



www.edvantia.org

EDVANTIA[®]

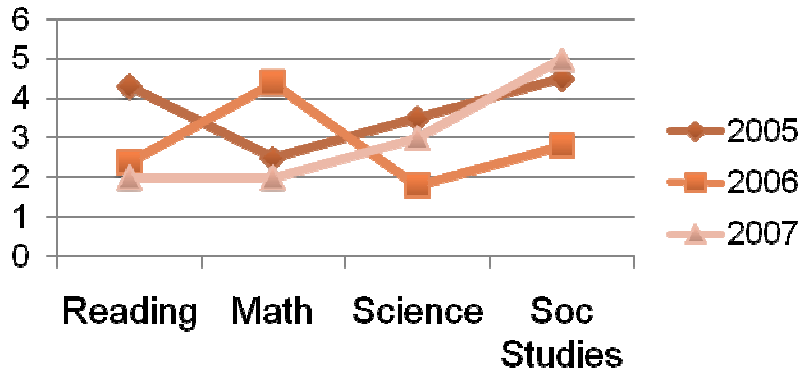


Diagnosis: Factors

- Magnitude of miss
- Change from previous year
- Important context factors
 - Teaching approach
 - School climate/culture
 - Recent changes (e.g., consolidation, staff turnover, population shifts)



Diagnosis: Tools





Diagnostic Tools for Schools and Districts

- Instruction and Learning Appraisal (school or district level)
- District audit
- Others

Solutions: Finding Your True North

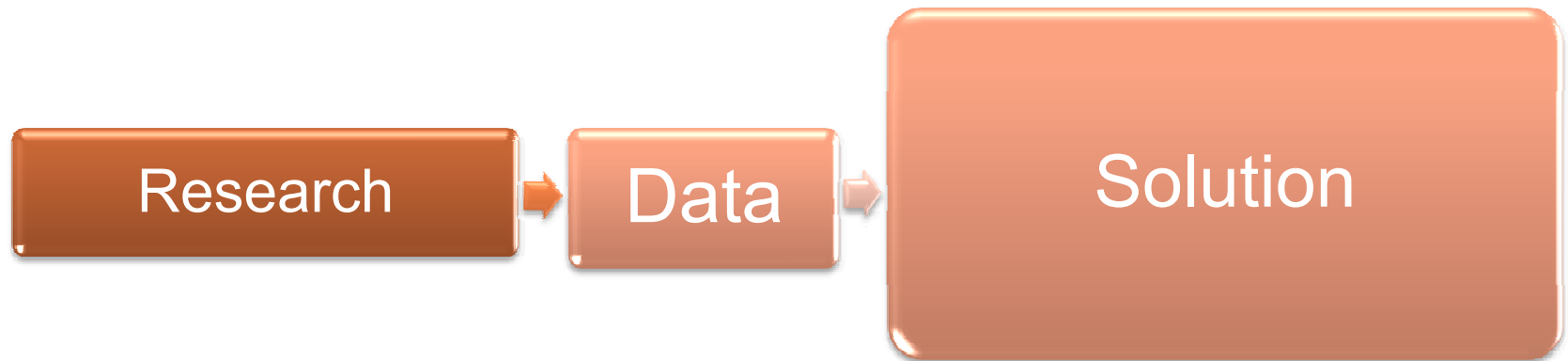


- Knowledge of research
- Wisdom of practice
- Story of data
- Solutions
- *RESULTS*



- To ask a question, type in the chat box or dial Star 1 on your phone.
- What might have kept past efforts from yielding the hoped-for results?
- What will you do differently this time?

Decision: Proven Solutions



The Power of Coaching



www.edvantia.org

EDVANTIA[®]

Put It in Gear





- To ask a question, type in the chat box or dial Star 1 on your phone.
- How might this decision-making approach fit with your existing initiatives?
- How does it differ from what you've tried in the past?

Schedule a Free Consultation

For a half-hour consultation,
phone Evan Osborn:
800.624.9120 ext. 5406.

Appointments will be scheduled on a
first-come, first-served basis.

Research Sources

- The Center for Comprehensive School Reform and Improvement (<http://www.centerforcsri.org>)
- Regional Educational Laboratory Network (<http://ies.ed.gov/ncee/edlabs>)
- Comprehensive Center Network of Content and Technical Assistance Centers (<http://www.ed.gov/programs/newccp/index.html>)
- U.S. Department of Education Institute of Education Sciences (<http://www.ed.gov/about/offices/list/ies/index.html>)



- Let's continue the conversation.
- Please type your question into the chat box or dial Star 1 to talk live.

Edvantia is a nonprofit corporation, founded in 1966, that partners with practitioners, education agencies, publishers, and service providers to transform education through research and development. Edvantia provides a range of services, including research, evaluation, professional development, and technical assistance.

© 2008 by Edvantia

For information about Edvantia products, or services, contact
P.O. Box 1348, Charleston, WV 25325
Phone 304.347.0400 • Fax 304.347.0487
info@edvantia.org • www.edvantia.org